

BAMFORTH'S LIFE MODEL SERIES, (ENGLAND) N.Y.C.



Miss Marian L.  
26 Avon St  
Cliff

IN A WUNDERKAMMER ONE CAN FIND LEGENDS AND MYSTERIES THAT ANIMATE A CHAOTIC UNIVERSE OF OBJECTS, BEING PLACED ON SHELVES OR ENCLOSED IN AN INFINITY OF DRAWERS OF ALL KINDS OF SHAPES AND SIZES. CURIOSITY IS INVINCIBLE IN THE HUMAN SOUL, IS THE SOURCE OF PASSION FOR WONDERFUL OBJECTS, INCLUDING THOSE CREATED IN THE RECENT PAST. IN REVOLT AGAINST A WORLD THAT WANTS EVERYONE TO BE HOMOLOGATED, THE INTEREST IN WHIMSICAL AND EVEN MAGICAL DESIGN IS GRADUALLY REGAINING ITS VIGOR IN THE ERA OF TECHNOLOGY. TREEMME EXHIBITS ITS OWN WUNDERKAMMER IN WHICH PIECES ARE SELECTED AND PRESENTED IN A CONTEMPORARY CONTEXT THROUGH A SUCCESSION OF OBJECTS BELONGING TO A RECENT PAST, WITH THE AIM OF TRANSPORTING THE VISITOR

INTO THE PURE REALM OF AMAZEMENT, INSPIRING THEIR DESIRE OF DISCOVERY, GRANTING THEM THE PRIVACY FROM PRYING EYES, INVASIONS AND NOISES.

IN UNA WUNDERKAMMER È POSSIBILE TROVARE, LEGGENDE E MISTERI CHE ANIMANO UNA INFINITÀ CAOTICA DI OGGETTI, COLLOCATI IN SCAFFALI O RACCHIUSI IN UN'INFINITÀ DI CASSETTI DI OGNI FOGGIA E MISURA. LA CURIOSITÀ È INVINCIBILE NELL'ANIMO UMANO E COSÌ PURE LA PASSIONE PER OGGETTI MERAVIGLIOSI, ANCHE DI UN RECENTE PASSATO. PER RIFLESSO AD UN MONDO CHE CI VUOLE SEMPRE PIÙ OMOLOGATI, L'INTERESSE PER IL DESIGN, ESTROSO E UN PO' MAGICO, SEMBRA AVERE RIACQUISTATO VIGORE NEGLI ANNI DELLA TECNOLOGIA. TREEMME PRESENTA LA PROPRIA



WUNDERKAMMER. PEZZI SELEZIONATI, PRESENTATI IN UN CONTESTO CONTEMPORANEO ATTRAVERSO UN SUSSEGUIRSI DI OGGETTI APPARTENENTI A UN RECENTE PASSATO, CON LO SCOPO DI TRASPORTARE IL VISITATORE NEL PURO REGNO DELLO STUPORE, IN UN DESIDERIO DI SCOPERTA, COSÌ COME LA VITA È PRIVATA, DIFESA DAGLI SGUARDI INDISCRETI, DALLE INVASIONI E DAI RUMORI.



l'universo  
in una stanza



## COMPANY

FOUR DECADES AFTER IT WAS FOUNDED, TREEMME RUBINETTERIE CONTINUES TO PROPOSE NEW COLLECTIONS RANGING FROM THE MOST TRADITIONAL TO THE MOST INNOVATIVE, WHILE PRESERVING THOSE CHARACTERISTICS THAT HAVE ALLOWED IT TO FLOURISH AND PROSPER: HIGH QUALITY, IMPECCABLE SERVICE AND THE ADDED VALUE OF MADE IN ITALY. IN RECENT YEARS, THE COMPANY HAS ENJOYED GREAT SUCCESS IN RELATION TO DESIGN, FOCUSING ON THE PERSONALISATION AND INNOVATION OF ITS PRODUCTS WITHOUT NEGLECTING THE CLASSIC AND MORE TRADITIONAL LINES.

TREEMME RUBINETTERIE HAS RECEIVED A NUMBER OF PRESTIGIOUS AWARDS, INCLUDING DESIGN PLUS, IN 2007, FOR BLOK BY GIANCARLO VEGNI, AND IN 2011, FOR PHILO, DESIGNED BY GIANLUCA BELLI/PHI CUBO AND FOR LIGHT, DESIGNED BY DANILO FEDELI. THE 5MM PROJECT, BY OCOSTUDIO E ING. CASTAGNOLI, WON THE DESIGN PLUS AWARD IN 2013, AND IN 2014 IT RECEIVED THE GRAN DESIGN ETICO, THE GERMAN DESIGN AWARD, THE PRESTIGIOUS RED DOT DESIGN AWARD, ADI DESIGN INDEX AWARD AND THE PREMIO COMPASSO D'ORO 2016. ITS LATEST CREATION, THE 22MM, AGAIN DESIGNED BY OCOSTUDIO E ING. CASTAGNOLI, WON THE ADI CERAMICS DESIGN AWARD. TREEMME RUBINETTERIE WAS FOUNDED IN 1968, IN ASCIANO, IN THE PROVINCE OF SIENA. ORIGINALLY, IT WAS CALLED "RUBINETTERIE TOSCANE 3M", A REFERENCE TO THE SINGULAR COINCIDENCE THAT THE SURNAME OF ALL THREE FOUNDING MEMBERS STARTS WITH THE LETTER M (RENATO MICHELANGIOLI, ARMANDO MEDINA AND GUIDO MENCARELLI). THE COMPANY STARTED OUT AS A WORKSHOP SPECIALISED IN THE ENTIRE TAP PRODUCTION PROCESS (CASTING, GALVANISING, POLISHING, FINISHING AND ASSEMBLING) AND QUICKLY EVOLVED THANKS TO THE OUTSTANDING ORGANIZATION THAT CHARACTERISED IT FROM DAY ONE. CONSUMERS SOON RECOGNISED AND APPRECIATED ITS METICULOUS APPROACH TO QUALITY AND CUSTOMER SERVICE. IN 1980, THE COMPANY STARTED A NEW COLOUR TREND BY LAUNCHING THE ARCOBALENO (RAINBOW) COLLECTION, CREATED WITH THE VALUABLE COLLABORATION OF THE DESIGN CALONACI & GAZZEL STUDIO. IN 1989, DURING ITS MAIN PHASE OF INTERNATIONAL EXPANSION, IT CHANGED ITS NAME, FIRST TO RUBINETTERIE 3M (WITHOUT THE WORD "TOSCANE") AND THEN TO TREEMME RUBINETTERIE, ESTABLISHING A BRAND THAT TODAY IS APPRECIATED BOTH IN ITALY AND ABROAD.





## AZIENDA

Dopo più di 40 anni di attività, TREEMME RUBINETTERIE propone costantemente nuove collezioni che spaziano dalle linee più innovative a quelle più tradizionali, conservando intatte le caratteristiche che ne hanno consentito la nascita e lo sviluppo: alta qualità, servizio impeccabile e la forza del MADE IN ITALY. Negli ultimi anni l'azienda ha ottenuto grandi risultati nel settore del design grazie ad una maggiore cura alla personalizzazione e all'innovazione dei prodotti, tutto questo senza tralasciare le linee più classiche e tradizionali. TREEMME RUBINETTERIE è stata insignita di prestigiosi riconoscimenti quali il DESIGN PLUS nel 2007 con BLOK di Giancarlo Piretti, nel 2011 con PHILO disegnato da Gianluca Belli/Phi Cubo e con LIGHT



DI DANILO FEDELI. CON IL PROGETTO 5MM DI OCOSTUDIO E ING.CASTAGNOLI, OLTRE AL DESIGN PLUS NEL 2013, HA INOLTRE VINTO NEL 2014 ANCHE IL GRAN DESIGN ETICO, GERMAN DESIGN AWARD, IL PRESTIGIOSO RED DOT DESIGN AWARD, ADI DESIGN INDEX ED INFINE L'AMBITO PREMIO COMPASSO D'ORO ADI 2016. MENTRE PER L'ULTIMA NATA LA 22MM SEMPRE DEL DUO OCOSTUDIO E ING.CASTAGNOLI, È STATO VINTO IL PREMIO ADI CERAMICS DESIGN AWARD. TREEMME RUBINETTERIE NASCE NEL 1968 AD ASCIANO IN PROVINCIA DI SIENA. L'AZIENDA FU INIZIALMENTE CHIAMATA "RUBINETTERIE TOSCANE 3M" PER UNA CURIOSA COINCIDENZA, OVVERO L'INIZIALE DEL COGNOME DEI TRE I SOCI FONDATORI (RENATO MICHELANGIOLI, ARMANDO MEDINA E GUIDO MENCARELLI). TREEMME RUBINETTERIE NASCE COME OFFICINA ARTIGIANALE DOVE SI REALIZZA

IL CICLO COMPLETO DI PRODUZIONE DEL RUBINETTO (FONDERIA, GALVANICA, PULIMENTATURA, VERNICIATURA E ASSEMBLAGGIO) E CRESCE IN FRETTA GRAZIE ALL'OTTIMA ORGANIZZAZIONE DELLA QUALE SI AVVALE FIN DA SUBITO. I CLIENTI NON TARDANO A RICONOSCERE E AD APPREZZARE LA METICOLOSA ATTENZIONE CHE VIENE RIVOLTA ALLA QUALITÀ E AL SERVIZIO AL CONSUMATORE. NEL 1980 L'AZIENDA LANCIÒ LA MODA DEL COLORE REALIZZANDO LA COLLEZIONE ARCOBALENO CON LA PREZIOSA COLLABORAZIONE DELLO STUDIO DESIGN COLONACI & GAZZEI. NEL 1989, DURANTE LA FASE DI MAGGIOR INTERNAZIONALIZZAZIONE, IL NOME DELL'AZIENDA VIENE MODIFICATO IN "RUBINETTERIE 3M" FINO AD ARRIVARE AL PIÙ RECENTE TREEMME RUBINETTERIE, UN BRAND AD OGGI AFFERMATO E APPREZZATO ANCHE OLTRE I CONFINI NAZIONALI.

# DESIGNED IN ITALY - MADE IN ITALY

AT TREEMME RUBINETTERIE THE RAW MATERIALS AS WELL AS THE DESIGN ARE MADE IN ITALY. EVER SINCE IT WAS FOUNDED, THE COMPANY HAS BEEN CREATING ITS PRODUCTS WITH THE VALUABLE COLLABORATION OF GREAT DESIGNERS, MOSTLY ITALIAN, THANKS TO WHOM THE BRAND HAS WON A NUMBER OF AWARDS.

RECENTLY, THE TREEMME RUBINETTERIE HAS BEEN REWARDED WITH PRESTIGIOUS PRIZES SUCH AS THE GERMAN DESIGN AWARDS, THE RED DOD DESIGN AWARD, THE DESIGN PLUS AWARD, AS WELL AS THE ADI DESIGN INDEX, ADI CERAMICS AWARD AND PREMIO COMPASSO D'ORO.

TREEMME RUBINETTERIE PRESERVES THE QUALITY OF ITS PRODUCTS AND THEIR INDIVIDUAL COMPONENTS BY CAREFULLY SELECTING ITS SUPPLIERS IN ITALY AND CARRYING OUT 80% OF ITS PRODUCTION IN-HOUSE.

A WORLDWIDE NETWORK OF COMMERCIAL AGENTS, IN CONTACT WITH ALL THE MAIN NATIONAL AND INTERNATIONAL SHOWROOMS, TAKES CARE OF THE MARKETING SIDE OF THE BUSINESS. THIS DISTRIBUTION NETWORK ALLOWS THE COMPANY TO BETTER SATISFY ITS CLIENTS' NEEDS BY OFFERING IMMEDIATE ASSISTANCE AND AN INCREDIBLE 15 YEAR GUARANTEE ON ALL ITS PRODUCTS.

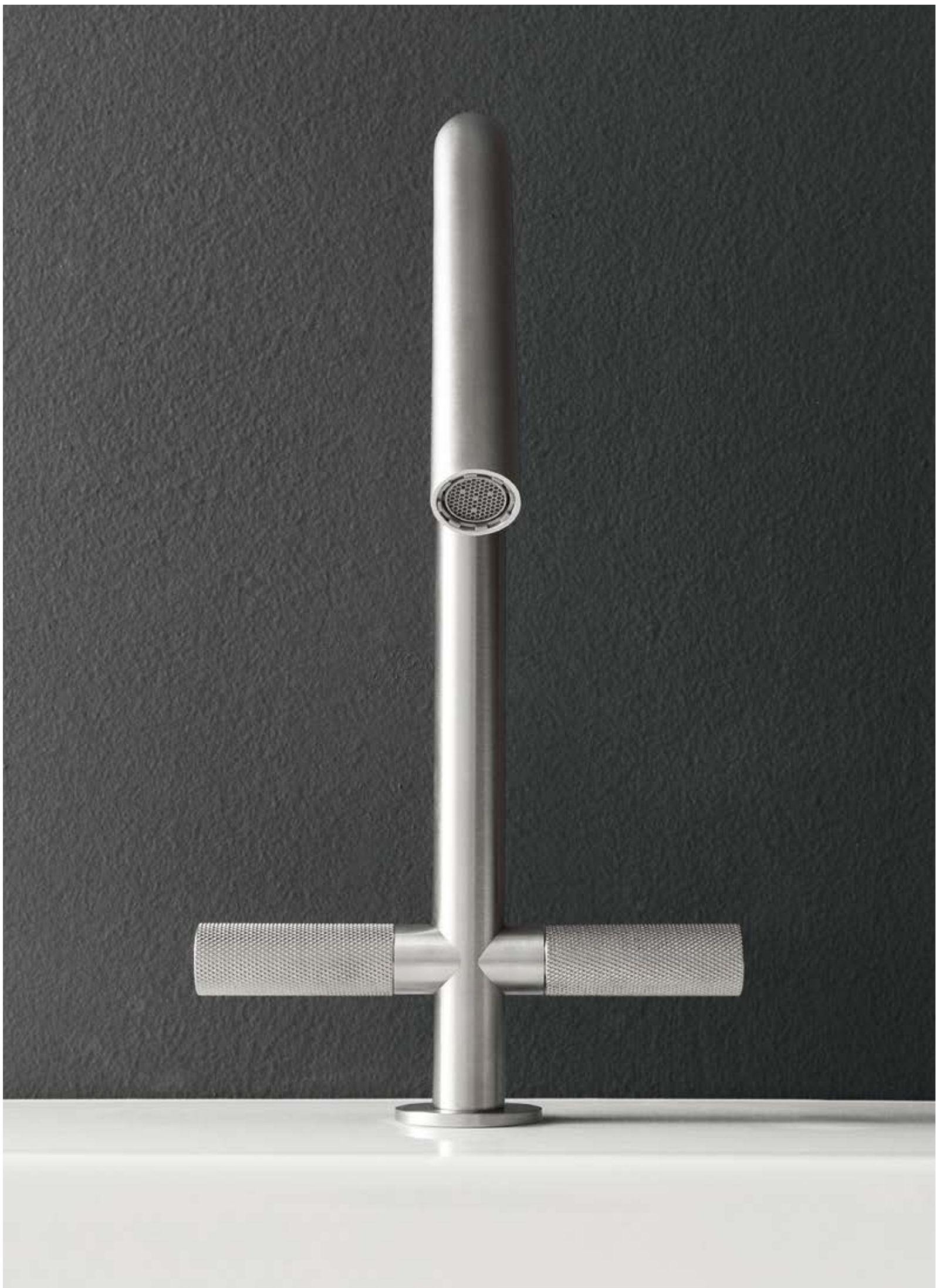
LA SCELTA DEL MADE IN ITALY NON AVVIENE SOLO PER LE MATERIE PRIME MA ANCHE PER IL DESIGN.

DA SEMPRE TREEMME RUBINETTERIE SI AVVALE DEL PREZIOSO CONTRIBUTO DI DESIGNER PER LO PIÙ ITALIANI PER LA PROGETTAZIONE DEI PRODOTTI, COLLABORAZIONI CHE HANNO PORTATO IL BRAND AD ESSERE PREMIATO CON NUMEROSI RICONOSCIMENTI.

NEGLI ULTIMI ANNI L'AZIENDA È STATA INSIGNITA DI PRESTIGIOSI PREMI COME IL GERMAN DESIGN AWARD, IL RED DOT DESIGN AWARD, IL DESIGN PLUS, ADI DESIGN INDEX, L'ADI CERAMICS AWARD E PREMIO COMPASSO D'ORO.

TREEMME RUBINETTERIE HA SCELTO DI CONSERVARE INTATTA LA PROVENIENZA DEI PROPRI PRODOTTI E DEI DIVERSI COMPONENTI DEGLI STESSI, SELEZIONANDO ATTENTAMENTE I FORNITORI NAZIONALI E REALIZZANDO IN STABILIMENTO PIÙ DELL'80% DELLA PRODUZIONE A CATALOGO.

LA COMMERCIALIZZAZIONE È AFFIDATA AD UNA RETE MONDIALE DI AGENTI CHE DISTRIBUISCONO I PRODOTTI NELLE PIÙ GRANDI SHOWROOM NAZIONALI ED INTERNAZIONALI. LA CAPILLARE RETE DI DISTRIBUZIONE CONSENTE ALL'AZIENDA DI SODDISFARE MAGGIORMENTE LE ESIGENZE DEI CLIENTI AI QUALI OFFRE UN'ASSISTENZA IMMEDIATA ED UNA GARANZIA DI BEN 15 ANNI SUI PROPRI PRODOTTI.



**WRAS**  
Water Regulations Advisory Scheme



NSF/ANSI 61/9  
ASME A112.18.1  
CSA B125.1  
U.P. CODE

SI RIMANDA ALL'OFFICIAL LISTING NSF PER  
CONSULTARE LA LISTA DEGLI ARTICOLI CERTIFICATI  
PLEASE CHECK THE NSF OFFICIAL LISTING  
TO VERIFY THE CERTIFIED ARTICLES

SISTEMA QUALITÀ CERTIFICATO



UNI EN ISO 9001 : 2008



## CERTIFICATIONS

TREEMME RUBINETTERIE KEEPS UPDATING AND RENEWING THE CERTIFICATIONS IT HAS OBTAINED IN RELATION TO THE QUALITY OF ITS PRODUCTS AND MANAGEMENT SYSTEMS AND THE COMPLIANCE WITH ENVIRONMENTAL POLICIES ACCORDING TO THE STANDARDS REQUIRED. RUBINETTERIE TREEMME STANDS OUT FOR THE QUALITY OF ITS PRODUCTS, ITS EXPERIENCE, TECHNOLOGY AND STYLE, AND TODAY IS PARTICULARLY FOCUSED ON ITS ENVIRONMENTAL APPROACH.

REDUCING ITS WATER CONSUMPTION AND THE QUANTITY OF LEAD AND NICKEL IN ITS PRODUCTION PROCESS ARE JUST SOME OF ITS MAIN COMMITMENTS TO THE ENVIRONMENT. THIS IS ACHIEVED BY USING THE COMPANY'S SPECIAL TECHNOLOGIES (RUVECO, ECO-CARTRIDGE, ENERGY-SAVING SYSTEM ETC.) AS WELL AS SPECIAL BRASS ALLOYS.

ATTENTION TO ENVIRONMENTAL ISSUES STARTS DURING THE VERY EARLY STAGES OF PRODUCTION, BY INTRODUCING PRODUCTION SYSTEMS WITH A VERY LOW ENVIRONMENTAL IMPACT, SUCH AS SOPHISTICATED WATER DEPURATION SYSTEMS THAT ALLOW TO RECYCLE ALL THE WATER USED IN THE CHROMIUM PLATING PROCESS. A NEW CLOSED-LOOP WASTEWATER MANAGEMENT PROCESS ALLOWS TO REDUCE CONSIDERABLY THE AMOUNT OF WATER AND CHROMIUM IN MUDDY RESIDUES. REDUCING WASTE IN THIS CASE MEANS REDUCING COSTS AS WELL AS ANY WATER-RELATED IMPACT ON THE ENVIRONMENT WHILE AT THE SAME TIME LOWERING POWER CONSUMPTION AND POLLUTION EMISSIONS AND IMPROVING EMPLOYEES' WORKING CONDITIONS.

USING ONLY MATERIALS OF THE HIGHEST QUALITY, WITH THE CHARACTERISTICS REQUIRED TO OBTAIN INTERNATIONAL PRODUCT CERTIFICATIONS, IS ANOTHER ESSENTIAL ASPECT.

INDIVIDUAL PRODUCT QUALITY CERTIFICATIONS (ACS IN FRANCE, PUB IN SINGAPORE, NSF61 IN THE US, WATERMARK IN AUSTRALIA, BELGAAQUA IN BELGIUM); ISO9001 PROCESS COMPLIANCE CERTIFICATION, AND OQC, QUALITY AND ORIGIN CERTIFICATION, WHICH GUARANTEES THE QUALITY AND ORIGIN OF PRODUCTS MADE IN ITALY.

TREEMME RUBINETTERIE POSSIÈDE E PERSEGUE CON CONTINUI AGGIORNAMENTI LE CERTIFICAZIONI DI QUALITÀ DEI PRODOTTI E DEI SERVIZI DI GESTIONE, DEL RISPETTO DELLE POLITICHE AMBIENTALI SECONDO GLI STANDARD PREVISTI. RUBINETTERIE TREEMME SI DISTINGUE PER QUALITÀ, GRANDE ESPERIENZA, TECNOLOGIA, STILE, ED OGGI VUOLE FOCALIZZARE L'ATTENZIONE SULLA SENSIBILITÀ CHE L'AZIENDA PONE NEI CONFRONTI DELL'AMBIENTE.

RIDURRE IL CONSUMO DELL'ACQUA, DIMINUIRE LE QUANTITÀ DI PIOMBO E NICHEL NELLA PRODUZIONE, SONO SOLO ALCUNI DEGLI ASPETTI DI MAGGIORE IMPORTANZA PER L'ECO SOSTENIBILITÀ.

TUTTE CARATTERISTICHE RAGGIUNTE GRAZIE ALL'UTILIZZO DI SPECIALI TECNOLOGIE (RUVECO, ECO-CARTRIDGE, ENERGY-SAVING SYSTEM ETC.) DI CUI L'AZIENDA DISPONE, OLTRE ALL'UTILIZZO DI SPECIALI LEGHE DI OTTONE.

IL RISPETTO PER L'AMBIENTE VIENE CONSIDERATO SIN DALLE PRIME FASI DI PRODUZIONE, CON L'INTRODUZIONE DI CICLI PRODUTTIVI A LIVELLI MINIMI DI IMPATTO AMBIENTALE, COME I SOFISTICATI IMPIANTI DI DEPURAZIONE E RICICLO COMPLETO DELL'ACQUA UTILIZZATA PER LA CROMATURA. UN INNOVATIVO PROCESSO DI TRATTAMENTO DELLE ACQUE A CICLO CHIUSO PERMETTE, INFATTI, DI RIDURRE IN MODO CONSISTENTE IL CONTENUTO IN ACQUA E CROMO DEI FANGHI RESIDUALI DA SMALTIRE. RIDURRE LO SPRECO IN QUESTO CASO NON SIGNIFICA QUINDI SOLO ABBASSARE I COSTI ECONOMICI E AMBIENTALI LEGATI ALL'ACQUA MA ANCHE ALL'ENERGIA E ALLE EMISSIONI INQUINANTI AD ESSA COLLEGATE, OLTRE CHE TUTELARE LE CONDIZIONI DI LAVORO DEI DIPENDENTI.

SEMPRE MAGGIORE IMPORTANZA È RISERVATA ANCHE ALL'UTILIZZO DI MATERIALE DI ALTA QUALITÀ E CON CARATTERISTICHE IDONEE PER POTER ACQUISIRE LE PIÙ IMPORTANTI CERTIFICAZIONI DI PRODOTTO INTERNAZIONALI.

MARCHI DEI SINGOLI PRODOTTI (ACS FRANCESE, PUB SINGAPORESE, NSF61 AMERICANA, WATERMARK AUSTRALIANA, BELGAAQUA BELGA) , MARCHIO DI PROCESSO ISO9001E DELLA CERTIFICAZIONE DI ORIGINE OQC (ORIGINE CONTROLLATA QUALITÀ) CHE GARANTISCE OLTRE ALLA QUALITÀ DEL PRODOTTO ANCHE LA REALE PROVENIENZA DEL MADE IN ITALY.



## REFERENCES

**Italy**

Grand Hotel Bastiani  
Grosseto

Toscana Resort Castelfalfi  
Montaione - Firenze

Grand Hotel Terme  
Castrocaro - Forlì Cesena

Grand Hotel Baglioni  
Firenze

Hotel Residence Roccamare  
Castiglione Della Pescaia  
Grosseto

Hotel El Balear  
Alghero - Sardegna

Helvetia & Bristol  
Firenze

Turin Palace  
Torino

Antico Masetto  
Pistoia

Baja Hotel  
Sardegna

Horse Country  
Sardegna

Corte Fiorita  
Sardegna

Il Convento  
Rapallo

La Bisaccia  
Sardegna

Sofitel Thalassa Timi Ama  
Sardegna

Catalunya  
Sardegna

Club Hotel  
Sardegna

La Valle  
Sardegna

Villa Cpichera  
Sardegna

San Pietro  
Napoli

Viminale  
Roma

Astor  
Modena

Joli  
Valverde Di Cesenatico

La Pace  
Bastia Umbra

La Tana  
Maratea

Sole Mare  
Ventimiglia

Colostrai  
Sardegna

Hotel Montirò  
S.Maria di Leuca

**Croatia**  
Borovnik  
Tisno

**France**  
Clim Hotel  
Paris

Mercure  
Pau

Mercure  
Bordeaux

Mercure  
Hyerès

Mercure  
Nice

Gray D'albion  
Cannes

Hostellerie De Plaisance  
Saint Emilion

Hotel Du Pont Vieux  
Carcassonne

Aigle Noir - Hôtel  
Fontainebleau

Hotel Michel Bras  
Laguiole

Hotel Best Western Beausejour  
Lourdes

Le Mas Des Herbes Blanches  
Joucas

Le Chabichou - Hôtel & Spa  
Courchevel

**Greece**

The Margi Hotel  
Vouliagmeni Athens

Candia Park Village  
Agios Nikolaos Crete

Milos Cove  
Milos

Asterias  
Thessaloniki

Somewhere Boutique Hotel  
Vouliagmeni Athens

Hotel Cavo Tagoo  
Mykonos

Domes Noruz  
Chania Crete

Katikies  
Mykonos

Manoulas Beach Hotel  
Mykonos

Mykonos Bay  
Mykonos

Mykonos No5  
Mykonos

**Portugal**  
Hotel Santiago de Alfama  
Lisboa

**Spain**  
Las Piramides  
Malaga

Edificio Nuñez de Balboa  
Madrid

Casa Alberola Alicante,  
Curio Collection by Hilton  
Alicante

Edificio Norte  
(San Pedro de Alcantara) Malaga

**Poland**  
Indigo Hotel  
Warsaw

**Canada**  
Dorval  
Montreal

**Dominican Republic**  
Plaza Colonial  
Santo Domingo

**Emirates**  
Old Town Project  
Dubai

Golf Tower  
Dubai

**Saudi Arabia**  
Yusuf Bin Aimeed Kanoo  
Saudi Building - Ryadh

**South Africa**  
Deunkeld 105 Properties  
Johannesburg

**Malesia**  
Le Meridien  
Kota Kinabalu

**Shangri-La**  
Kota Kinabalu

**Taiwan**  
One  
Taichung

Le Meridien  
Taipei

**Mainland China**  
Star River Residential

Shimao Huajjachi

Shimao Nanjing Xiaguan

Shimao Suzhou Yunhecheng

Shimao Wuhan

Star River Haiyi  
peninsula phase III

Star River Haiyi  
peninsula phase IV

Star River Shanghai hotel

Star River Shanghai phase II

Star River Pudong phase III

Star River Xi'an

Star River Hotel Pudong

Star River Tai Yuan

Star River Hotel Shanghai

Star River Macau

Star River Phoenix Valley  
Residential

**Hong Kong**  
The Cadogan  
150 Belcher's Street

Belcher 97  
7, Belcher's Street

The Babington Hill  
23 Babington Path

The King's Hill  
38-52 Western Street

Twin Regency  
11, Tak Yip Street

Shatin Hotel  
Sun Hung Kai Property

W680 Commercial Building  
680 Castle Peak Road

## DESIGNERS



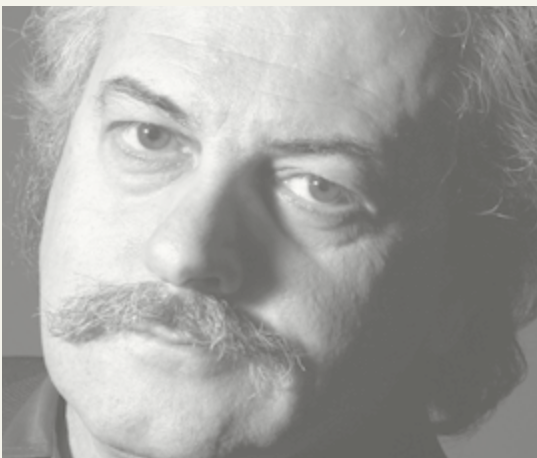
### EMANUEL GARGANO - MARCO FAGIOLI

BOTH EMANUEL GARGANO AND MARCO FAGIOLI ARE GRADUATES OF THE ISTITUTO SUPERIORE PER LE INDUSTRIE ARTISTICHE DI URBINO (1994-1998), AND AFTER A FEW YEARS OF PROFESSIONAL EXPERIENCE, THEY FOUNDED THEIR STUDIO IN UMBRIA. THEIR WORK EXPERIMENTS DIRECTLY WITH A VARIETY OF MATERIALS, USED BOTH AS VISUAL TOOLS AND AS A MODE OF EXPRESSION. THEY ARE CURRENTLY INVOLVED IN PRIVATE HOME PROJECTS, INSTALLATIONS, COMMUNICATIONS PROJECTS AND INDUSTRIAL DESIGNS. IN 2008 THEY WON THE GOOD DESIGN AWARD FROM THE CHICAGO ATHENAEUM FOR THEIR MULTIPLO PROJECT FOR THE INDESIT COMPANY. IN THAT SAME YEAR THEY ALSO RECEIVED THE KITCHEN OF THE YEAR AWARD FOR THEIR ANIMA SPACE KITCHEN PROJECT FROM THE DANISH MAGAZINE BoBEDRE, DESIGNED FOR BINOVA. THAT SAME PROJECT WAS, FURTHERMORE, ALSO CHOSEN BY ELLE DECOR INTERNATIONAL DESIGN AWARDS IN THE KITCHENS CATEGORY. THE INSTALLATION THEY DESIGNED FOR VASELLI, MARMOMACC 2009 WON THEM THE BEST COMMUNICATOR AWARD 2009. IN 2013 THEY WON THE DESIGN PLUS FOR THE COLLECTION 5MM DESIGNED TO TREEMME TAPS.



### PHICUBO \_ ALESSANDRA BERTINI - GIANLUCA BELLI

GIANLUCA BELLI COMES TO DESIGN FOLLOWING AN UNUSUAL AND NON-LINEAR PATH. DESIGN AS A PLACE WHERE MECHANICAL DESIGN, STUDIED DURING HIGH SCHOOL AT A TECHNICAL COLLEGE AND THE AESTHETIC-FORMAL EDUCATION, GAINED DURING HIS ARTISTIC STUDIES AT UNIVERSITY, SPLIT BETWEEN THE D.A.M.S. (ART, MUSIC AND PERFORMING FACULTY) OF BOLOGNA AND THE ACCADEMIA DI BELLE ARTI (FINE ARTS ACADEMY) OF FLORENCE, WHERE HE STUDIED SCULPTING. DURING THIS PERIOD HE PARTICIPATED IN VARIOUS ILLUSTRATION AND PAINTING GROUP EXHIBITIONS. THE GUIDELINE OF HIS DESIGN IS AESTHETIC AND CONCEPTUAL FUNCTIONALITY. "RETHINK THE WORLD" IS HIS DESIGN APPROACH, A MODUS OPERANDI WHICH HE SHARES WITH ARCHITECT ALESSANDRA BERTINI, A GRADUATE OF THE FACULTY OF ARCHITECTURE OF FLORENCE IN 2004 WITH A THESIS ON UNIVERSAL DESIGN. THIS IS WHAT LED TO THE CREATION OF PHICUBO. ACTIVE SINCE MARCH 2007, PHICUBO HAS BEEN INVOLVED IN DESIGN AND RESEARCH, LINKING ITS NAME TO THE TOPIC OF ECO-SUSTAINABILITY AND UNIVERSAL DESIGN, FOR WHICH IT HAS BEEN REWARDED BY THE TUSCAN REGION IN 2010 AS ONE OF THE 60 ECO-EFFICIENT COMPANIES IN TUSCANY. ASIDES THE CONTINUING RESEARCH ON BIODEGRADABLE MATERIALS AND ALTERNATIVE ENERGIES, PHICUBO COLLABORATES WITH VARIOUS ITALIAN COMPANIES IN DIFFERENT AREAS OF DESIGN, FROM THE FURNISHING SECTOR, PHARMACEUTICALS, TO ARCHITECTURE AND URBAN FURNISHINGS.



### GIANCARLO VEGNI

A DESIGNER WITH A MULTIDISCIPLINARY APPROACH, HE BOASTS A WELL-ESTABLISHED EXPERIENCE IN THE KITCHEN FURNISHING SECTOR, GAINED BY WORKING IN THE FERRETTI DESIGN TEAM SINCE 1968. SINCE 1976 HE HAS BEEN HEADING HIS STUDIO, WORKING IN THE INDUSTRIAL DESIGN, INTERIOR DESIGN AND COMMUNICATION SECTORS. HIS PROJECTS ARE BASED ON FUNCTIONALITY AND ESSENTIAL LINES. HIS ACTIVITY IS VARIED, MOVING WITH EASE BETWEEN DIFFERENT PRODUCT TYPES. HE DESIGNS KITCHENS, BATHROOMS, LIVING AREAS, SHOPS AND EXHIBITION STANDS AND WORKS IN DIFFERENT MARKET SECTORS SUCH AS FURNITURE, SAILING, CARS AND INTERIOR ARCHITECTURE. HE CONTINUALLY SEEKS THE DISTINGUISHING DETAIL OF AN OBJECT TO HIGHLIGHT ITS IDENTITY. HIS GOAL IS TO GIVE EMOTIONS AND WELL-BEING. HE WORKS FOR ESTABLISHED BRANDS SUCH AS EFFETI, FOR WHOM HE COORDINATES THE ARTISTIC DESIGN AND CORPORATE IDENTITY, EDRA, SEVEN, ANTONIO LUPI, FASEM, MAZZEI, ZANUSSI, IVECO, NOVAMOBILI, UNITALIA, BERTOCCHI, LEMA, CANDY, TREEMME, VALLI&VALLI. HIGHLY REGARDED AND INTERNATIONALLY FAMOUS, HE EXPORTS THE QUALITY OF ITALIAN DESIGN AROUND THE WORLD.



### MASSIMILIANO BRACONI

WAS BORN ON 25 NOVEMBER 1974 IN CIVITA CASTELLANA. AFTER COMPLETING THE ART SCHOOL, HE GRADUATED FROM THE EUROPEAN INSTITUTE OF DESIGN (IED) IN ROME IN 2000 HE FOUNDED HIS OWN STUDIO IN VITERBO STARTING TO COLLABORATE WITH INTERNATIONAL COMPANIES SUCH AS DESIGNER, ART DIRECTOR AND ARTIST. WINS A'DESIGN AWARDS 2016, GERMAN DESIGN AWARD 2017, ICON AWARDS 2018, ICON AWARDS 2019, INDEX ADI 2019 (COMPASSO D'ORO 2020 SELECTION), THE ARCHIPRODUCT DESIGN AWARDS 2019, THE GOOD DESIGN AWARDS OF CHICAGO 2020 AND THE IF DESIGN AWARD 2020. CHAMELEONIC AND VISIONARY ARTIST, HE REALIZES HIS UTOPIAS IN THE WIDEST AND MOST LIBERATING SENSE POSSIBLE, ADVANCES HIMSELF BY CONSTANTLY SEEKING A TASTE FOR "AESTHETICS" AS AN AUTHENTIC EXPERIENCE OF THE INDIVIDUAL. CONSTANTLY SEARCHING FOR UNUSUAL VISUAL AND SENSORIAL CONCEPTS, HE COMBINES ART AND DESIGN, CREATING HIS OWN LANGUAGE PURE VISUAL FREE FROM THE USUAL AND INFECTED REALITIES. HIS PRISTINE SIGN EXAMINES HUMAN CONSCIOUSNESS, OBSERVES THE PAST AND CURRENT CULTURAL TASTE, HOWEVER HE CREATES COMELY AND VISIONARY CHIMERAS, AVANT-GARDE PRODUCTS AND WORKS THAT HE PRESENTS TO SOPHISTICATED AND ATYPICAL VIEWERS. "UNCONVENTIONAL VISIONARY ARTIST"

## STUDIO Q-BIC

Q-BIC IS A FULL SERVICE VISUAL IDENTITY AND BRANDING AGENCY. FOUNDED IN 2005 BY BROTHERS LUCA (ARCHITECT) AND MARCO BALDINI (DESIGNER) THEIR PROJECTS RANGE FROM ARCHITECTURAL STATEMENTS AND GRAPHIC IDENTITY PROJECTS THROUGH TO SCENOGRAPHY (THEATRES) AND COMMERCIAL DESIGN PROJECTS (TEMPORARY EVENTS). "WE CONCEIVE OUR DESIGN PROJECTS AS AN ATTITUDE OR STATEMENT WHERE THERE IS A RECOGNIZABLE CHARACTER. ONCE THIS CHARACTER TAKES FORM AND IDENTITY, WE ARE THEN ABLE TO DELIVER THIS IDENTITY THROUGH THE RELEVANT SPACES AND CREATIVE MEDIUMS"



## DANILO FEDELI

DANILO FEDELI WAS BORN IN LUCIGNANO (PROVINCE OF AREZZO) IN 1973. HE GRADUATED, CUM LAUDE, IN INDUSTRIAL DESIGN AT THE FACULTY OF ARCHITECTURE OF FLORENCE, WITH A THESIS ON THE BATHROOM AND ITS NEW ETHICAL AND SOCIAL DIMENSION IN RELATION TO WATER. HE WORKED AS A DESIGNER FOR A WELL-KNOWN COMPANY OPERATING IN THE SHOWER SYSTEMS SECTOR, WHERE HE GAINED SIGNIFICANT EXPERIENCE IN THE BATHROOM SECTOR, BEFORE GOING FREELANCE. IN 2008 HE FOUNDED HIS 3DF STUDIO, DEVELOPING DESIGN PROJECTS. TODAY HE COLLABORATES WITH WELL-KNOWN NATIONAL COMPANIES AND DESIGNS FURNISHING PRODUCTS AND EVEN STAGINGS FOR THE FASHION SECTOR. HE CONTINUALLY SEEKS NEW USES FOR SHAPES, AND BELIEVES THAT BEAUTY IS NOT DESIGNABLE, BUT THAT IT LIES SILENTLY IN THE SIMPLICITY OF CONTINUOUS LINES. HIS WORKS ARE A SOPHISTICATED COMBINATION OF EVERYDAY EXPERIENCES AND PASSIONS, IN A SINGLE VISION OF THE WORLD TO BE. HE HAS PARTICIPATED AT INTERNATIONAL COMPETITIONS AND HAS ACHIEVED SIGNIFICANT RESULTS. A FELLOW OF THE ADI (ITALIAN INDUSTRIAL DESIGN ASSOCIATION) AS OF 2009.



## GIAMPIERO CASTAGNOLI

GIAMPIERO CASTAGNOLI GRADUATED IN MECHANICAL ENGINEERING IN 1974. HE HAS DEDICATED HIS SUCCESSFUL CAREER TO THE BATHROOM FIXTURES INDUSTRY, HOLDING IMPORTANT MANAGERIAL ROLES IN LEADING COMPANIES BOTH IN ITALY AND ACROSS EUROPE. SINCE 1985 HE HAS COMPLETELY RENOVATED THE COMPANY'S PRODUCT RANGE AND BEEN INVOLVED IN DESIGN, PLANNING, ENGINEERING AND INTERNAL PRODUCTION. THE REGISTRATION OF SIGNIFICANT PATENTS HAS IMPROVED CONSIDERABLY THE RANGE OF PRODUCTS, ESPECIALLY IN RELATION TO TAPS (FOR EXAMPLE, THE PWS SYSTEM). DURING THE YEARS, HE HAS PUBLISHED A NUMBER OF ARTICLES IN SPECIALISED MAGAZINES AND UNIVERSITY TEXTBOOKS. SINCE 2008, HE WORKS AS A FREELANCER OFFERING HIS EXPERTISE TO A NUMBER OF LEADING COMPANIES IN THE BATHROOM FIXTURES & DESIGN BUSINESS.



## MARCO PISATI

DESIGNER FASCINATED BY NEW MATERIALS AND NEW TECHNOLOGIES, TESTS HIS IDEAS IN THE MOST EXTREME SECTORS: STARTING FROM THE AEROSPACE, DESIGNING INTERIORS BOUND TO THE CONCEPT OF SPACE HABITABILITY IN ABSENCE OF GRAVITY FOR THE A.S.I. (ITALIAN SPACE AGENCY), REACHING THE EARTH'S NOMADIC ONE, REALIZING THE FIRST EXAMPLE OF INTERACTIVE NOMADIC OFFICE (MOTORHOME ACI 2002). INVITED TO EXPOSE HIS WORKS AT LEOPOLDA EXPOSITION IN FLORENCE (DEEP INSIDE-IMAGE 2003) HE PRESENTED WITH THE COMPANY GRADO ZERO ESPACE, LEADER BRAND IN THE AEROSPACE TEXTILE BRANCH, A PROTOTYPE OF A JACKET FOR ASTRONAUTS IN DIAPLEX (A TISSUE WITH A MEMORY OF SHAPES). HE COOPERATE WITH COMPANIES AS : A.S.I., ALENIA SPAZIO, IACSA, GRADO ZERO ESPACE, IGUZZINI ILLUMINAZIONE, A.C.I., EMILIO PUCCI (LVMH GROUP), BANDINI RUBINETTERIE, IL BAGNO BANDINI, K8 RADIATORI, GLASS DESIGN, CERAMICA & COMPLEMENTI, 3M RUBINETTERIE.







## CONTENTS

W-70s	18
5MM	30
22MM	44
WATERTUBE	56
28MM	70
3.6	84
40MM	96
WATT	110
Q30	122
APPIA	136
KEA	148



# 5MM

EMANUEL GARGANO  
MARCO FAGIOLI  
GIAMPIERO GASTAGNOLI



Premio Compasso d'Oro ADI 2016



DESIGN PLUS



German  
Design Award



reddot design award

grandesignEtico 



5MM IS CREATED COMPLETELY IN SATIN STAINLESS STEEL (FREE FROM ANY TRACE OF IRON, CHROME OR NICKEL) AND IS AVAILABLE IN THE FLAT SURFACE VERSION (55 MM LONG, 210 MM DEEP AND 155 MM HIGH) AND IN THE WALL VERSION (150 MM LONG, 220 MM DEEP AND 60 MM HIGH). THE 5MM DESIGN EXPRESSES THE ESSENTIAL CHARACTERISTICS OF THE TECHNOLOGY THAT GENERATED IT - ITS CONSTANT THICKNESS IS IN FACT FIVE MILLIMETRES - AS WELL AS THE OUTFLOW OF WATER FROM ITS SPOUT, AND THE INTERNAL PASSAGE WITH ALL ITS MIXING CAPACITY. THIS PATENT ACTUALLY ALLOWS WATER TO PASS THROUGH FIVE MILLIMETRES EVEN IN THE FLAT VERSION. USING A SINGLE THICKNESS FOR ALL PARTS OF THE TAP, FOR THE CONTROL HANDLES AND ALSO FOR ALL SERIES APPLICATIONS MAKE THE 5MM DESIGN LIGHT, IMPALPABLE... ALMOST DELICATE. THIS IS A TECHNOLOGY WHERE EVERY DETAIL HAS BEEN STUDIED TO ENSURE AN INNOVATIVE APPEARANCE, AN AVANT-GARDE LINE AND AT THE SAME TIME PAY THE GREATEST ATTENTION TO ECO-SUSTAINABILITY AND SAVING WATER.

5MM È REALIZZATO COMPLETAMENTE IN ACCIAIO INOX SATINATO (ASSENTE QUALSIASI TRACCIA DI PIOMBO, CROMO E NICHEL) ED È DISPONIBILE NELLA VERSIONE DA PIANO (55 MM DI LARGHEZZA, 210 MM DI PROFONDITÀ E 155 MM DI ALTEZZA) E IN QUELLA A PARETE (150 MM DI LARGHEZZA, 220 MM DI PROFONDITÀ E 60 MM DI ALTEZZA). IL DESIGN DI 5MM ESPRIME QUELLE CHE SONO LE CARATTERISTICHE ESSENZIALI DELLA TECNOLOGIA CHE LO HA GENERATO, CINQUE MILLIMETRI È INFATTI LO SPESSORE COSTANTE IN CUI AVVIENE, OLTRE ALLA FUORIUSCITA DELL'ACQUA DALLA BOCCA, ANCHE IL PASSAGGIO INTERNO CON TUTTE LE SUE DINAMICHE DI MISCELAZIONE. QUESTO BREVETTO INFATTI PERMETTE IL PASSAGGIO DELL'ACQUA IN CINQUE MILLIMETRI ANCHE NELLA VERSIONE DA PIANO. L'UTILIZZO DI UN UNICO SPESSORE PER TUTTI I COMPONENTI DEL RUBINETTO, PER LE LEVE DI COMANDO E ANCHE PER TUTTE LE APPLICAZIONI DELLA SERIE RENDONO IL DESIGN DI 5MM LEGGERO, IMPALPABILE... QUASI ETereo. SI TRATTA DI UNA TECNOLOGIA STUDIATA NEI MINIMI PARTICOLARI PER GARANTIRE UN'ESTETICA INNOVATIVA, UNA LINEA ALL'AVANGUARDIA E AL CONTEMPO UNA GRANDE ATTENZIONE ALL'ECO-SOSTENIBILITÀ E AL RISPARMIO IDRICO.





RWIT 2551 IS 10  
Concealed washbasin mixer  
Miscelatore lavabo incasso

IT 2514 IS 5F ZZ  
Washbasin mixer  
Miscelatore lavabo



RWIT 2851 IS 97  
Concealed washbasin mixer  
Miscelatore lavabo incasso





MAGGIE BELL • SUICIDE SAL  
ONE STEP BEYOND  
POLYDOR 2383 313 A

KEN LOVICH STATELESS  
STARLESS AND BIBLE BLACK  
POLYDOR 2310 521

KING CRIMSON  
STARLESS AND BIBLE BLACK  
POLYDOR 2310 521

JOHN LAM HOODER  
BACK ON THE ROAD - JOE EGAN  
Home of the Blues  
POLYDOR 2310 521

ERIC WEISSBERG AND STEVE MANDELL / DUELING BANDS  
THE BROKEN CIRCLE BREAKDOWN  
POLYDOR 2310 521

WEATHER REPORT / MR. GONE  
VAN MORRISON - KING OF THE MUSIC  
POLYDOR 2310 521

TEARS FOR FEARS/SONGS FROM THE BIG CHAIR  
VIOLATION  
POLYDOR 2310 521

THE STEVE MILLER BAND  
THE BEST OF STEVE MILLER 1966-1973  
POLYDOR 2310 521

RAY CHARLES  
YET I BAYM  
POLYDOR 2310 521

THE WONDERFUL WORLD OF SAM COOKE  
SEX PISTOLS  
POLYDOR 2310 521

THE ROLLING STONES RECORDS  
ROLLING STONES RECORDS  
POLYDOR 2310 521

THE ROLLING STONES RECORDS  
ROLLING STONES RECORDS  
POLYDOR 2310 521

THE ROLLING STONES RECORDS  
ROLLING STONES RECORDS  
POLYDOR 2310 521

THE ROLLING STONES RECORDS  
ROLLING STONES RECORDS  
POLYDOR 2310 521

THE ROLLING STONES RECORDS  
ROLLING STONES RECORDS  
POLYDOR 2310 521

THE ROLLING STONES RECORDS  
ROLLING STONES RECORDS  
POLYDOR 2310 521

THE ROLLING STONES RECORDS  
ROLLING STONES RECORDS  
POLYDOR 2310 521

THE ROLLING STONES RECORDS  
ROLLING STONES RECORDS  
POLYDOR 2310 521

THE ROLLING STONES RECORDS  
ROLLING STONES RECORDS  
POLYDOR 2310 521

THE ROLLING STONES RECORDS  
ROLLING STONES RECORDS  
POLYDOR 2310 521

THE ROLLING STONES RECORDS  
ROLLING STONES RECORDS  
POLYDOR 2310 521

THE ROLLING STONES RECORDS  
ROLLING STONES RECORDS  
POLYDOR 2310 521

THE ROLLING STONES RECORDS  
ROLLING STONES RECORDS  
POLYDOR 2310 521

THE ROLLING STONES RECORDS  
ROLLING STONES RECORDS  
POLYDOR 2310 521

THE ROLLING STONES RECORDS  
ROLLING STONES RECORDS  
POLYDOR 2310 521

THE ROLLING STONES RECORDS  
ROLLING STONES RECORDS  
POLYDOR 2310 521

THE ROLLING STONES RECORDS  
ROLLING STONES RECORDS  
POLYDOR 2310 521

THE ROLLING STONES RECORDS  
ROLLING STONES RECORDS  
POLYDOR 2310 521

THE ROLLING STONES RECORDS  
ROLLING STONES RECORDS  
POLYDOR 2310 521



IT 9065 IS ZZ ZZ  
50 cm. towel holder  
Portasalviette cm. 50

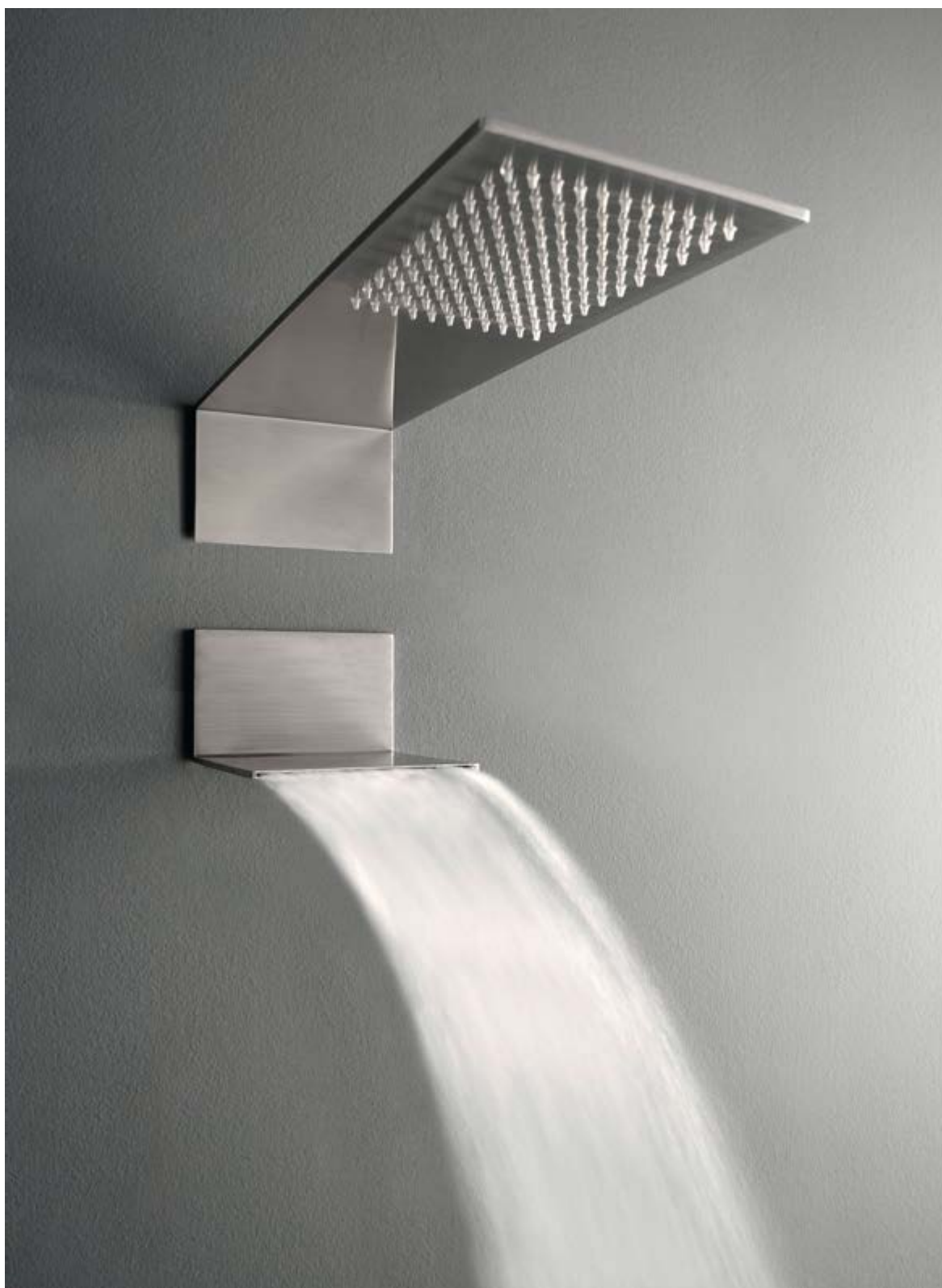
IT 9026 IS ZZ ZZ  
49,2 cm. bathroom shelf  
Mensola cm. 49,2



RWIT 2805 IS 12  
Concealed bath/shower mixer  
Miscelatore vasca/doccia incasso



RWIT 2847 IS 01 + RWIT 2847 IS 21  
Shower head and cascade  
Soffione a parete e cascata



RWIT 2847 IS 01 + RWIT 2808 IS 96  
Shower set  
Set doccia





22MM  
EMANUEL GARGANO  
MARCO FAGIOLI  
GIAMPIERO GASTAGNOLI





THE INSPIRATION FOR THE DESIGN OF 22MM IS BORN FROM THE ATTEMPT TO CREATE SIMPLE SHAPES, WHICH ARE EASY TO USE AND HAVE A RECOGNISABLE PERSONALITY. THE DISTINCTIVE TRAIT OF THIS NEW COLLECTION CONSISTS IN A NEW TECHNOLOGY THAT MINIATURISES THE TECHNICAL PARTS. 22MM IS IN FACT THE CONSTANT DIAMETER FOR ALL PARTS OF THE TAP, THE DISPENSER AND THEIR CONTROLS. THIS DIAMETER ENSURES GREAT AESTHETIC LIGHTNESS, CLEAN LINES AND FLEXIBILITY MEANING IT CAN BE INSERTED INTO MANY DIFFERENT TYPES OF WASHBASIN. FOR THE GREATEST TECHNICAL AND ENVIRONMENTAL RELIABILITY, THE 22MM COLLECTION HAS BEEN CREATED FROM AISI 316L STAINLESS STEEL. THE CONTROLS, WHICH HAVE BEEN MADE SPECIALLY TO MAKE THEM EASIER TO GRIP, CAN ALSO BE MADE FROM WOOD AND CORIAN.

DOPO IL GRANDE SUCCESSO DI 5MM, OCOSTUDIO E ING. CASTAGNOLI TORNANO A DISEGNARE PER TREEMME RUBINETTERIE E PRESENTA IL NUOVISSIMO PROGETTO 22MM. L'ISPIRAZIONE PER IL DESIGN DI 22MM NASCE DAL TENTATIVO DI CREARE FORME SEMPLICI, DI FACILE UTILIZZO E CHE ABBIANO UNA PERSONALITÀ RICONOSCIBILE. LA PARTICOLARITÀ DI QUESTA NUOVA COLLEZIONE CONSISTE IN UNA NUOVA TECNOLOGIA DI MINIATURIZZAZIONE DELLE PARTI TECNICHE, 22MM INFATTI È IL DIAMETRO COSTANTE PER TUTTE LE PARTI DEL RUBINETTO, DALL'EROGATORE AI SUOI COMANDI. QUESTO DIAMETRO GARANTISCE UNA GRANDE LEGGEREZZA ESTETICA, UNA PULIZIA DI SEGNO E UNA GRANDE FLESSIBILITÀ DI INSERIMENTO ALL'INTERNO DI TIPOLOGIE DI LAVABI MOLTO DIVERSI TRA LORO. PER LA MASSIMA AFFIDABILITÀ TECNICA ED ECOLOGICA LA COLLEZIONE 22MM È STATA REALIZZATA IN ACCIAIO INOX AISI 316L.

RWIT 1151 IS 03  
Concealed washbasin mixer  
Miscelatore monocomando lavabo incasso



IT 6014 IS 2G ZZ  
Single hole washbasin  
Monoforo lavabo







IT 8365 IS ZZ ZZ  
50 cm. towel holder  
Portasalviette cm. 50





RWIT 11A2 IS 01  
Concealed mixer with 2 ways diverter  
Miscelatore monocomando con deviatore 2 uscite



IT 6597 IS ZZ ZZ + RWIT 11C2 IS 01 + RWIT 2847 IS 71  
Shower set  
Set doccia





WATERTUBE  
MASSIMILIANO BRACONI



“I BELIEVE IN SIMPLE VISUAL LANGUAGES AND IN TIMELESS PRODUCTS. FOR THE CREATION OF WATERTUBE I WAS INSPIRED BY THE CLASSIC PUBLIC FOUNTAINS OF THE PAST, WHERE THE WATER Poured DOWN FROM A SIMPLE COPPER TUBE. I WANTED TO CAPTURE THE PRIMITIVE ESSENCE OF THAT VISUAL PURENESS, TRANSFERRING IT TO A MODERN PRODUCT PERFECT FOR A CONTEMPORARY AND INDUSTRIAL BATHROOM”. THIS IS HOW MASSIMILIANO BRACONI, THE DESIGNER OF THIS NEW LINE, DESCRIBED THE INSPIRATION OF HIS IDEA.

“CREDO NEI SEMPLICI LINGUAGGI VISIVI E NEI VERI PRODOTTI SENZA TEMPO. PER WATERTUBE MI SONO LASCIATO ISPIRARE DALLE CLASSICHE FONTANE PUBBLICHE DEL PASSATO, QUELLE DALLE QUALI L'ACQUA SCROSCIAVA ATTRAVERSO UN SEMPLICE TUBO DI RAME. HO VOLUTO RICERCARE L'ESSENZA PRIMITIVA DI QUELLA PUREZZA VISIVA, REGALANDOLA A UN PRODOTTO MODERNO PERFETTO PER UN BAGNO CONTEMPORANEO E INDUSTRIALE”. COSÌ MASSIMILIANO BRACONI, IL DESIGNER CHE HA FIRMATO QUESTA NUOVA LINEA, RACCONTA L'ISPIRAZIONE DALLA QUALE È NATA L'IDEA.

IT 4A11 03 WT ZZ  
Washbasin mixer  
Miscelatore monocomando lavabo



IT 4A18 01 WT ZZ  
Washbasin mixer  
Miscelatore monocomando lavabo











RWIT 4AA5 IS 02  
Concealed washbasin mixer  
Miscelatore monocomando lavabo incasso





RWIT 4AD8 04 04  
Concealed bath/shower mixer  
Miscelatore vasca/doccia incasso



IT RTBR 409 IS  
3 functions ceiling shower-head  
Soffione a soffitto 3 funzioni



# 28MM

MARCO PISATI & GIAMPIERO CASTAGNOLI



MINIMALIST, CLEAN, ELEGANT STYLE FOR 28MM, THE NEW MODEL DESIGNED BY GIAMPIERO CASTAGNOLI AND MARCO PISATI. MANUFACTURED IN STEEL, 28MM FEATURES DISTINCTIVE, UNDERSTATED, BASIC DESIGN THAT FITS PERFECTLY WITH CONTEMPORARY AS WELL AS MORE CLASSIC STYLES OF BATHROOM.

STILE MINIMALE, PULITO ED ELEGANTE PER 28MM, IL NUOVO MODELLO DISEGNATO DA GIAMPIERO CASTAGNOLI E MARCO PISATI. REALIZZATO IN ACCIAIO, 28MM POSSIEDE UN CARATTERE DISTINTIVO, DISCRETO ED ESSENZIALE CHE SI ADATTA PERFETTAMENTE ALL'AMBIENTE BAGNO CONTEMPORANEO E ANCHE A QUELLO PIÙ CLASSICO.

IT 3B11 IS GD ZZ  
Washbasin mixer  
Miscelatore monocomando lavabo



















RWIT 5BD7 NF 01  
Concealed bath/shower mixer  
Miscelatore vasca/doccia incasso

RWIT 3BC5 04 01  
Concealed washbasin mixer  
Miscelatore monocomando lavabo incasso





RWIT 3B47 IS 01 + RWIT 3BC2 IS G1  
+ RWIT 3B47 IS 71  
Shower set  
Set doccia





3.6

GIAMPIERO GASTAGNOLI

3.6 IS ONE OF THE NEW COLLECTIONS DESIGNED BY GIAMPIERO CASTAGNOLI, AND DURING THE ISH EXHIBITION THE PROJECT WILL UNVEIL A BRAND NEW ELECTRONIC VERSION. DESIGN AND TECHNOLOGY CONVERGE IN A PROJECT THAT ADAPTS PERFECTLY TO THE LATEST DEMANDS OF AN INCREASINGLY DIGITAL, CONNECTED MARKET. INDEED, 3.6 ELETTRONICO CAN BE CONNECTED TO SMART DIGITAL ASSISTANTS LIKE ALEXA, WHICH CAN THEN BE USED TO OPERATE THE MIXER TAP. THE NEW VERSION EXTENDS THE 3.6 SERIES, ALREADY PROPOSED WITH A CYLINDRICAL CONTROL KNOB OR A SOPHISTICATED, SLENDER LEVER WITH STRAIGHT-LINED DESIGN. 3.6 IS A COLLECTION DESIGNED TO ADAPT PERFECTLY TO EVERY BATHROOM THANKS TO ITS CONTEMPORARY AESTHETICS CHARACTERIZED BY UNDERSTATED, ELEGANT SHAPES. THE PROJECT IS PRODUCED ENTIRELY IN GRADE 316 STAINLESS STEEL.

3.6 È UNA DELLE NUOVE COLLEZIONI DISEGNATA DA GIAMPIERO CASTAGNOLI, IN OCCASIONE DELLA FIERA ISH, SI PRESENTA IN UN'INEDITA VERSIONE ELETTRONICA. DESIGN E TECNOLOGIA SI FONDONO IN UN PROGETTO CHE SI ADATTA PERFETTAMENTE ALLE ATTUALI ESIGENZE DI UN MERCATO SEMPRE PIÙ DIGITALE E CONNESSO. 3.6 ELETTRONICO PUÒ ESSERE INFATTI COLLEGATO AGLI ASSISTENTI PERSONALI INTELLIGENTI COME ALEXA ATTRAVERSO I QUALI È POSSIBILE COMANDARE IL MISCELATORE. LA NUOVA VERSIONE AMPLIA LA SERIE 3.6, GIÀ PROPOSTA CON MANOPOLA CILINDRICA OPPURE CON UNA SOFISTICATA LEVA SOTTILE DALLE LINEE SQUADRATE. 3.6 È UNA COLLEZIONE PENSATA PER ADATTARSI PERFETTAMENTE AD OGNI AMBIENTE BAGNO GRAZIE AD UN'ESTETICA CONTEMPORANEA, CARATTERIZZATA DA FORME ESSENZIALI ED ELEGANTI. SI TRATTA DI UN PROGETTO INTERAMENTE REALIZZATO IN ACCIAIO INOX 316.



IT 9A11 IS TS ZZ  
Washbasin mixer  
Miscelatore monocomando lavabo







IT 9A18 IS TZ ZZ  
Washbasin mixer  
Miscelatore monocomando lavabo



RWIT 9AA5 IS 21  
Concealed washbasin mixer  
Miscelatore monocomando lavabo incasso

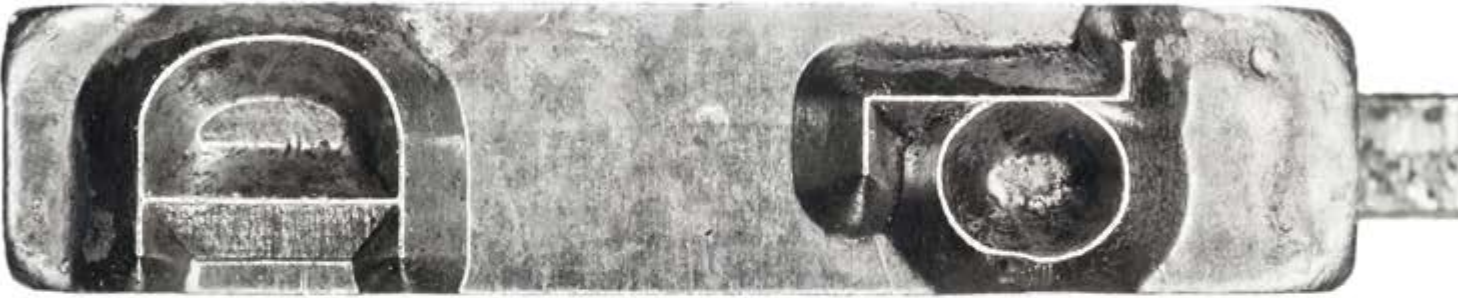


RWIT 9AD7 01 03  
Concealed bath/shower mixer  
Miscelatore vasca/doccia incasso



RWIT 9AD9 IS 21 + RWIT 2847 IS 21  
Concealed bath/shower mixer  
Miscelatore vasca/doccia incasso





40MM  
TREEMME

THE 40MM LINE PERFECTLY COMBINES CLASSIC SHAPES WITH MODERN DESIGN. THE DELICACY AND ELEGANCE OF THE SHAPES BLEND INTO A TIMELESS DESIGN, MAKING THIS A VERSATILE COLLECTION ADAPTABLE TO DIFFERENT BATHROOM SOLUTIONS. 40MM, DESIGNED BY THE COMPANY'S OWN TECHNICAL TEAM, IS MADE OF STAINLESS STEEL WITH A STRUCTURE MEASURING 40 MM IN DIAMETER. THE COMPANY DREW INSPIRATION FROM THE BASIC NEEDS OF A BATHROOM SETTING IN CREATING THIS COLLECTION, OFFERING A PRODUCT MARKED BY ITS HIGHLY PRACTICAL AND ELEGANT DESIGN.

LA LINEA 40MM CONIUGA ALLA PERFEZIONE LA CLASSICITÀ DELLE FORME ALLA MODERNITÀ DEL DESIGN. LA DELICATEZZA E L'ELEGANZA DELLE FORME SI FONDONO IN UN DISEGNO CHE VUOLE ESSERE SENZA TEMPO, RENDENDO TALE SERIE VERSATILE ED ADATTABILE ALLE DIVERSE SOLUZIONI BAGNO. 40MM, STUDIATA DALL'UFFICIO TECNICO INTERNO ALL'AZIENDA, È REALIZZATA IN ACCIAIO INOX CON UNA STRUTTURA CHE MISURA 40 MM DI DIAMETRO. PER L'IDEAZIONE DI QUESTA COLLEZIONE L'AZIENDA SI È ISPIRATA ALLE NECESSITÀ PRIMARIE DELL'AMBIENTE BAGNO, PROPONENDO UN PRODOTTO CARATTERIZZATO DA UN ALTO DESIGN FUNZIONALE ED ELEGANTE.





IT 1311 01 40 ZZ  
Washbasin mixer  
Miscelatore monocomando lavabo



IT 1315 IS ZZ ZZ  
Electronic washbasin tap  
Rubinetto elettronico con fotocellula



IT 1318 04 40 ZZ  
Washbasin mixer  
Miscelatore monocomando lavabo



OLYMPIA

Traveller de Luxe

RWIT 13C5 03 02  
Concealed washbasin mixer  
Miscelatore monocomando lavabo incasso



RWIT 13D7 IS 03  
Concealed bath/shower mixer  
Miscelatore vasca/doccia incasso





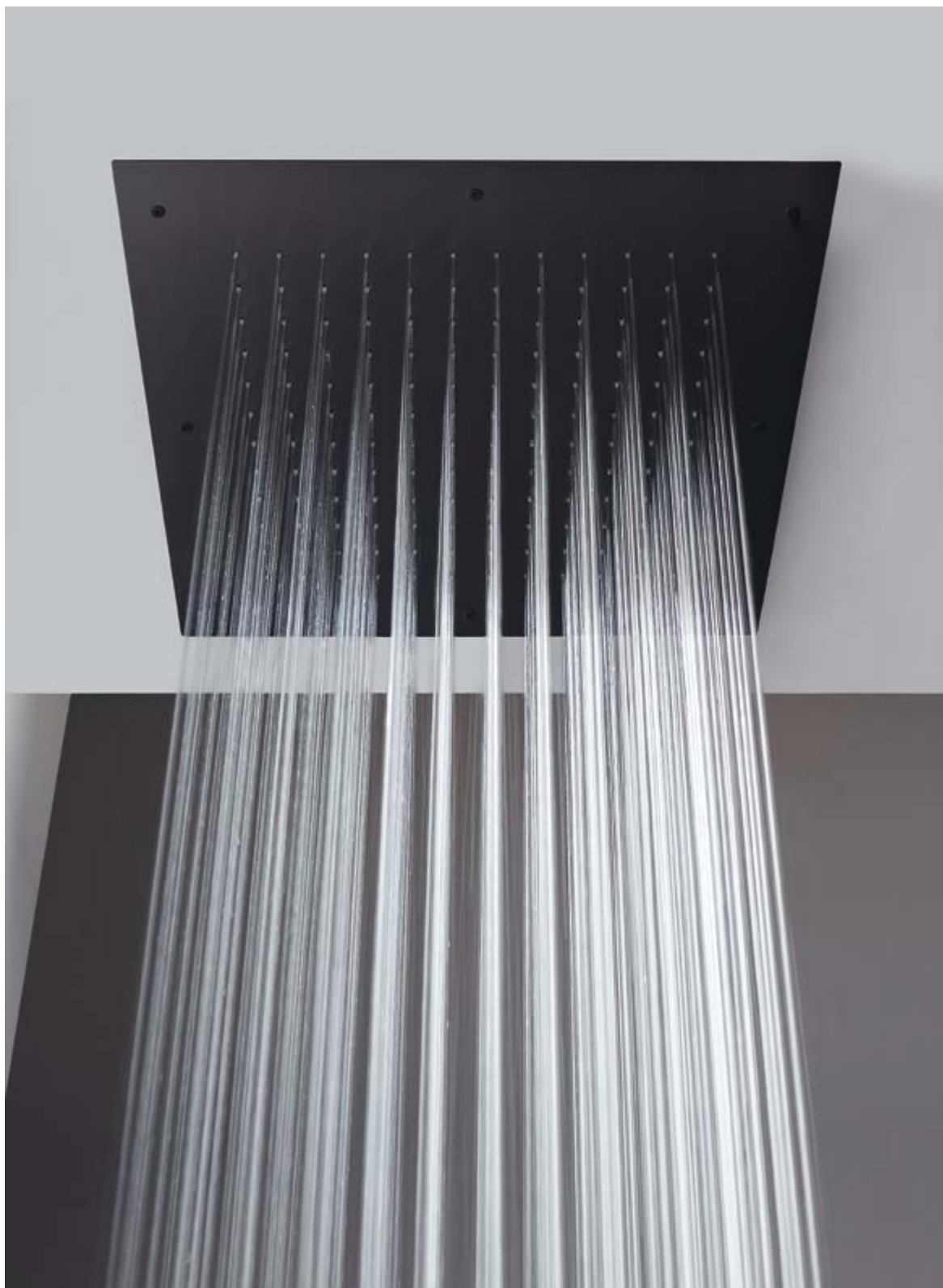
My S



tory



IT RTBR 302 01  
Ceiling shower-head  
Soffione a soffitto



RWIT 13F2 IS 02  
Concealed mixer with 2 ways diverter  
Miscelatore monocomando con deviatore 2 uscite





- +

**Volume**



# W-70s

STUDIO KINOWA



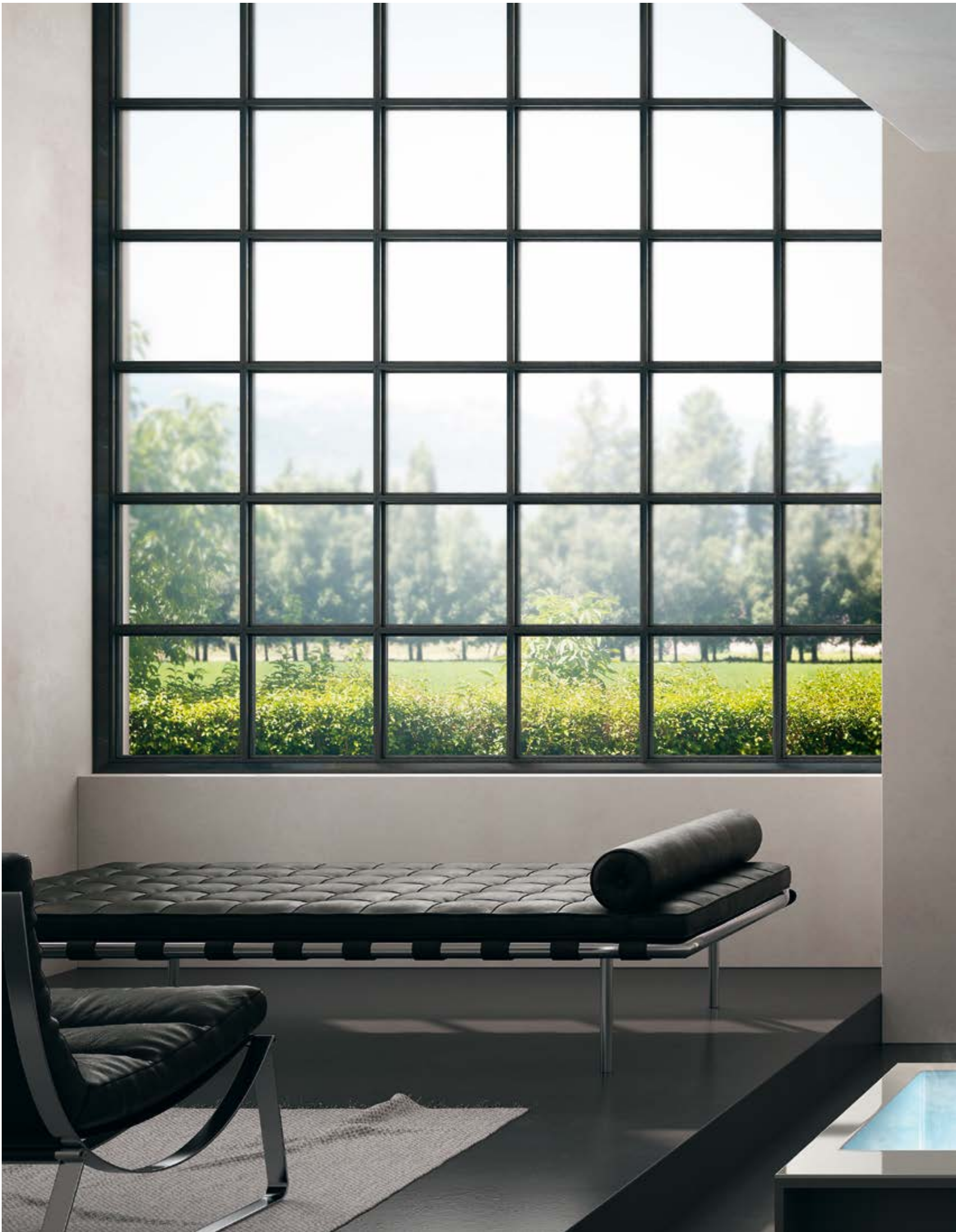


W-70s, DESIGNED BY STUDIO KINOWA, IS A LINE OF SHOWER THERMOSTATIC MIXERS CHARACTERIZED BY A CONTEMPORARY STYLE WELL SUITED TO ALL KINDS OF SHOWER HEAD. THE COLLECTION IS AN INNOVATION BOTH IN AESTHETIC AND IN DESIGN.

W-70s, DISEGNATA DA STUDIO KINOWA, È UNA LINEA DI COMANDI DOCCIA TERMOSTATICI CONTRADDISTINTA DA UNO STILE CONTEMPORANEO CHE BEN SI ADATTA A QUALSIASI SOFFIONE DOCCIA. SI TRATTA DI UNA COLLEZIONE INNOVATIVA SIA DA UN PUNTO DI VISTA ESTETICO CHE PROGETTUALE.

RWIT 7B86 NF 01  
Thermostatic Shower set  
Set doccia termostatico







RWIT 7B94 BB 01 + RWIT 2BF6 BB 25  
Thermostatic Shower set  
Set doccia termostatico





RWIT 7B94 BB 01 + RWIT 2BF6 BB 25  
Thermostatic Shower set  
Set doccia termostatico







RWIT 7B94 CZ 01 + RWIT 2BF6 CZ 25  
Thermostatic Shower set  
Set doccia termostatico





WATT  
STUDIO Q-BIC



reddot design award

“FROM LIGHT TO WATER” THE ARCHITECTURAL FIRM Q-BIC SIGNS THE NEW WATT COLLECTION. WATT IS THE NEW PROPOSAL OF SINGLE-LEVER AND THERMOSTATIC SHOWER VALVES FOR BUILT-IN SHOWERS INSPIRED BY THE WORLD OF LIGHTING. “THE ELECTRICITY WORLD WAS PART OF MY FAMILY BACKGROUND, AND IT RESURFACED AS I DESIGNED THIS NEW COLLECTION” SAID MARCO BALDINI FROM Q-BIC. “I WANTED TO GIVE THIS LINE A VINTAGE LOOK THAT RECALLED THE OLD LIGHT SWITCHES, BUT IN A MODERN DESIGN STYLE. THE NAME WATT CAME AS A CONSEQUENCE”.

“DALLA LUCE ALL’ACQUA” LO STUDIO DI ARCHITETTURA Q-BIC FIRMA LA NUOVA COLLEZIONE WATT. WATT È LA NUOVISSIMA PROPOSTA DI MONOCOMANDO E TERMOSTATICI PER DOCCIA DA INCASSO ISPIRATI AL MONDO DELL’ILLUMINAZIONE. “IL MONDO DELL’ELETTRICITÀ FACEVA PARTE DEL MIO BACKGROUND FAMILIARE ED È RIAFFIORATO MENTRE PROGETTAVO QUESTA NUOVA COLLEZIONE” RACCONTA MARCO BALDINI DI Q-BIC. “HO QUINDI VOLUTO DARE A QUESTA LINEA UN ASPETTO VINTAGE CHE RICORDASSE LE PLACCHE ELETTRICHE DI UNA VOLTA, IL TUTTO OVVIAMENTE IN UN’OTTICA ASSOLUTAMENTE MODERNA E DI DESIGN. IL NOME WATT È POI VENUTO DA SÉ DI CONSEGUENZA”.





RWIT 2B89 NF 01 + RWIT 2BF6 NF 25  
Thermostatic Shower set  
Set doccia termostatico





RWIT 2B94 NN 01 + RWIT 2BF6 NN 45  
Shower set  
Set doccia





IT RTBR 381 03 + RWIT 2B94 03 01 + RWIT 2BF6 03 25  
Shower set  
Set doccia



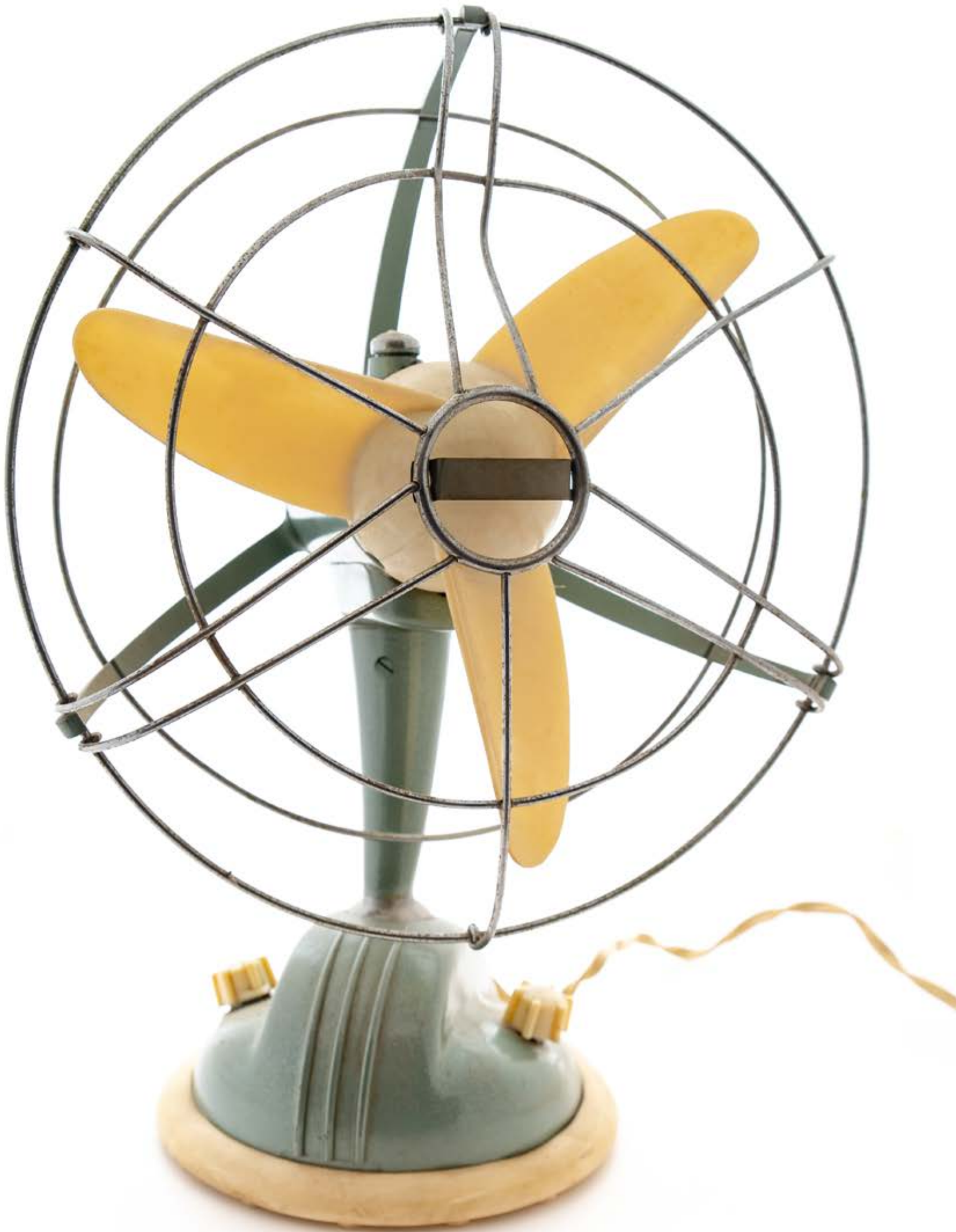


RWIT 2B86 04 01 + RWIT 2BF6 04 25  
Thermostatic Shower set  
Set doccia termostatico



IT 2B60 HH WA ZZ  
Shower set  
Gruppo doccia





Q30  
MARCO PISATI & GIAMPIERO CASTAGNOLI



Q30 IS THE RESULT OF A PROJECT THAT COMBINES TECHNICAL AND FUNCTIONAL RESEARCH WITH A REFINED AND TIMELESS DESIGN. INNOVATIVE, MINIMALIST AND VERSATILE! THE Q30 SERIES WAS BORN FROM THE NEED TO CREATE A MODEL OF TAPS AND FITTINGS WITH SQUARE LINES WHERE LIGHT SHAPES PREVAIL. Q30 IS CHARACTERISED BY A COSMOPOLITAN TASTE, EASILY ADAPTABLE TO DIFFERENT STYLES, FOR THOSE WHO ARE LOOKING FOR INNOVATION AND CUTTING-EDGE SHAPES.

Q30, È FRUTTO DI UN PROCESSO PROGETTUALE CHE UNISCE LA RICERCA TECNICA E FUNZIONALE A UN DESIGN RAFFINATO SENZA TEMPO. INNOVATIVA, MINIMALISTA E VERSATILE! LA SERIE Q30 È NATA DALL'ESIGENZA DI REALIZZARE UN MODELLO DI RUBINETTERIA DALLE LINEE SQUADRATE DOVE PREVALESSE LA LEGGEREZZA ASSOLUTA DELLE FORME. Q30 È CONTRADDISTINTA DA UN GUSTO COSMOPOLITA, FACILMENTE ADATTABILE A DIVERSI STILI, CHE SI RIVOLGE A UN PUBBLICO ATTENTO ALL'INNOVAZIONE E ALLA RICERCA DI FORME ALL'AVANGUARDIA.



IT 4B11 CZ QT ZZ  
Washbasin mixer  
Miscelatore monocomando lavabo



IT 4B18 CZ QT ZZ  
Washbasin mixer  
Miscelatore monocomando lavabo













RWIT 4BD7 HH 01  
Concealed bath/shower mixer  
Miscelatore vasca/doccia incasso



RWIT 4BD9 CC 01 + IT 6510 CC ZZ ZZ  
Shower set  
Set doccia



RWIT 4B47 NF 01 + RWIT 2B86 NF 01  
RWIT 2BF6 NF 45  
Thermostatic Shower set  
Set doccia termostatico





APPIA  
DANILO FEDELI - 3DF



IT 3C16 CC AO ZZ  
3 hole washbasin  
Batteria lavabo

A NEW CLASSIC: INSPIRED BY THE PAST WITH A CONTEMPORARY TWIST. THE APPIA COLLECTION, DESIGNED BY DANILO FEDELI FOR RUBINETTERIE TREEMME, FEATURES BOTH SINGLE-HOLE AND THREE-HOLE PIECES. A COMPLETE LINE OF FAUCETS DESIGNED TO BRING A REFINED AND SOPHISTICATED TOUCH TO THE BATHROOM. THE VERY NAME OF THE COLLECTION EVOKES ITS STYLISTIC CHARACTER: RIGOROUS FORMS THAT RECALL THE PAST IN A MODERN TONE. MADE OF BRASS, APPIA IS AVAILABLE IN 12 FINISHES THAT ALLOW FOR MAXIMUM CUSTOMIZATION. THESE FAUCETS ARE TRULY DISTINCTIVE ELEMENTS OF BATHROOM FURNISHING.

UN NUOVO CLASSICO CHE SI ISPIRA AL PASSATO CON UNO STILE CONTEMPORANEO. LA COLLEZIONE APPIA FIRMATA DA DANILO FEDELI PER RUBINETTERIE TREEMME SI COMPONE DI ELEMENTI MONOFORO E A TRE FORI. UNA PROPOSTA COMPLETA DI RUBINETTI PENSATI PER ARREDARE IL BAGNO CON UN GUSTO SOFISTICATO E RICERCATO. IL NOME STESSO DELLA COLLEZIONE NE EVOCA L'IMPRONTA STILISTICA: FORME RIGOROSE CHE RACCONTANO IL PASSATO IN CHIAVE MODERNA. REALIZZATA IN OTTONE, APPIA È DISPONIBILE IN 12 FINITURE CHE PERMETTONO LA MASSIMA PERSONALIZZAZIONE. I RUBINETTI DELLA LINEA DIVENTANO VERI E PROPRI ELEMENTI DISTINTIVI ALL'INTERNO DELL'AMBIENTE BAGNO.



RWIT 3C52 NL AO  
Wall mounted washbasin  
Gruppo lavabo a muro



IT 3C14 HH AO ZZ  
Single hole washbasin  
Monoforo lavabo







KM/h

60 80 100 120  
171085

RWIT 2705 DD 74 + RWIT 3CD5 DD 01  
+ x2 RWIT 3C40 DD 01 + IT 3C63 DD ZZ HF  
Bath/shower set  
Set vasca/doccia





IT RTBR 377 CC + RWIT 3C75 CC 01  
+ RWIT 2705 CC 74  
Thermostatic Shower set  
Set doccia termostatico







KEA

MARCO PISATI & GIAMPIERO CASTAGNOLI



**archiproducts**

DESIGN AWARDS

—  
WINNER 2020

KEA, DESIGNED BY PISATI & CASTAGNOLI, IS A CLASSIC TAP THAT PRODUCES A STRONG VISUAL IMPACT, CELEBRATING THE AESTHETIC CANONS OF THE PAST WHILE APPLYING MODERN TECHNOLOGY AND INNOVATION. THE MOUTH IS GROOVED LIKE ANCIENT GREEK COLUMNS, WHILE THE BRASS JOYSTICKS ARE DESIGNED TO RESEMBLE ARCHITECTURAL FRAGMENTS FROM CLASSIC TEMPLES. KEA IS A LINE OF ABSOLUTE ELEGANCE. THE COLLECTION ALSO INCLUDES TWO BRAND-NEW VERSIONS: WITH MARBLE AND CRYSTAL KNOBS ILLUMINATED FROM WITHIN BY A MINIATURE LED SYSTEM, USING LIGHT TO EMPHASIZE THE DECORATION AND TRANSPARENCY OF THE MATERIAL.

KEA, DISEGNATA DA PISATI & CASTAGNOLI, È UN RUBINETTO CLASSICO DI GRANDISSIMO IMPATTO VISIVO CHE CELEBRA LA RISCOPERTA DEI CANONI ESTETICI DEL PASSATO APPLICANDO LA TECNOLOGIA E L'INNOVAZIONE MODERNA. LA BOCCA È SCANALATA COME LE ANTICHE COLONNE GRECHE, MENTRE LE MANOPOLE IN OTTONE SONO DISEGNATE IN GUIA DI FRAMMENTI ARCHITETTONICI DI TEMPLI CLASSICI. KEA È UNA LINEA DI ELEGANZA ASSOLUTA. IN COLLEZIONE SONO PROPOSTE ANCHE DUE INEDITE VERSIONI: CON MANOPOLE IN MARMO E CON MANOPOLE IN CRISTALLO ILLUMINATE DALL'INTERNO CON UN SISTEMA MINIATURIZZATO DI LED, CHE SOTTOLINEA ATTRAVERSO LA LUCE LA DECORAZIONE E LA TRASPARENZA DEL MATERIALE.





IT 7A16 US KO ZZ  
3 hole washbasin  
Batteria lavabo

IT 7A16 HH KO ZZ  
3 hole washbasin  
Batteria lavabo



IT 7A16 DD K2 ZZ  
3 hole washbasin  
Batteria lavabo





THE LEEFONDNI

GETTO

OTT

OTT



RWIT 7A52 DD RO  
Wall mounted washbasin  
Gruppo lavabo a muro





RWIT 7A86 NL K2  
2 ways concealed thermostatic  
Termostatico incasso 2 uscite



IT RTBR 380 NL  
Anti-limescale shower-head  
Soffione a parete anticalcare



I dati e le immagini contenuti nel presente catalogo sono da ritenersi indicativi,  
Rubinetterie 3M S.r.l. si riserva la facoltà di modificare o adeguare anche senza obbligo di preavviso

The images and information contained in this catalogue are to be considered indicative  
and may be subject to variations without prior notice

Les images et les informations contenues dans ce catalogue sont fournies à titre indicatif  
et peuvent faire l'objet de modifications sans aucun préavis

Die in diesem Katalog enthaltenen Bilder und Daten dienen nur zur Illustration  
und können auch ohne vorherige Ankündigung geändert werden

Изображения и данные, содержащиеся в этом каталоге, следует рассматривать как ориентировочные  
и могут быть изменены даже без предварительного уведомления

Las imágenes y datos que apare en este catálogo son a modo indicativo pudiendo  
sufrir variaciones incluso sin previo aviso

本图册中包含的皆为指示性的图片与信息  
如有更改，恕不另行通知

De afbeeldingen en informatie in deze catalogus dienen als indicatief te worden beschouwd  
en kunnen zonder voorafgaande kennisgeving worden gewijzigd

Dane i obrazy zawarte w tym katalogu / cenniku należy traktować jako orientacyjne - poglądowe  
Rubinetterie 3M S.r.l. zastrzega sobie prawo do modyfikacji lub adaptacji nawet bez wcześniejszego powiadomienia

RUBINETTERIE  
**treemme**  
*instruments for water*

Rubinetterie 3M S.r.l.  
Via Mattei, 10 \_ 53041 Asciano-Siena-Italy  
Tel. +39 0577 71 82 93 \_ Export +39 0577 71 60 92  
[www.rubinetterie3m.it](http://www.rubinetterie3m.it)

Architects | 2024

